

**OWA**

# RAW Concrete Information Sheet

The defining characteristic of an OWA 'RAW concrete' mineral ceiling is the unique aesthetic. During the finishing process, the surface is neither pigmented nor laminated, allowing the natural colour and texture of the underlying tile to be preserved. Colour variations within each board and from panel to panel are an integral part of the design concept, which draws inspiration from the industrial look and appearance of exposed concrete. For further information, please refer to Section 4.2 of the RAW Installation Guideline.

It is important to note that the surface colour nuances may differ between production batches. Consequently, the product samples we provide may exhibit variations based on the specific production batch. To create an authentic and random look, we recommend mixing panels from various cartons when installing them. Additional information can be found in the installation guide.

To illustrate the appearance, the following pages include reference projects that have been successfully completed. These examples may serve as inspiration for planners and decision-makers, highlighting the distinctive surface properties of RAW.



### OWAconsult collection

**Project:** Jorink , De Echte Bakker, Raalte  
**Product:** OWA RAW concrete  
**Country:** Netherlands  
**Segment:** Retail





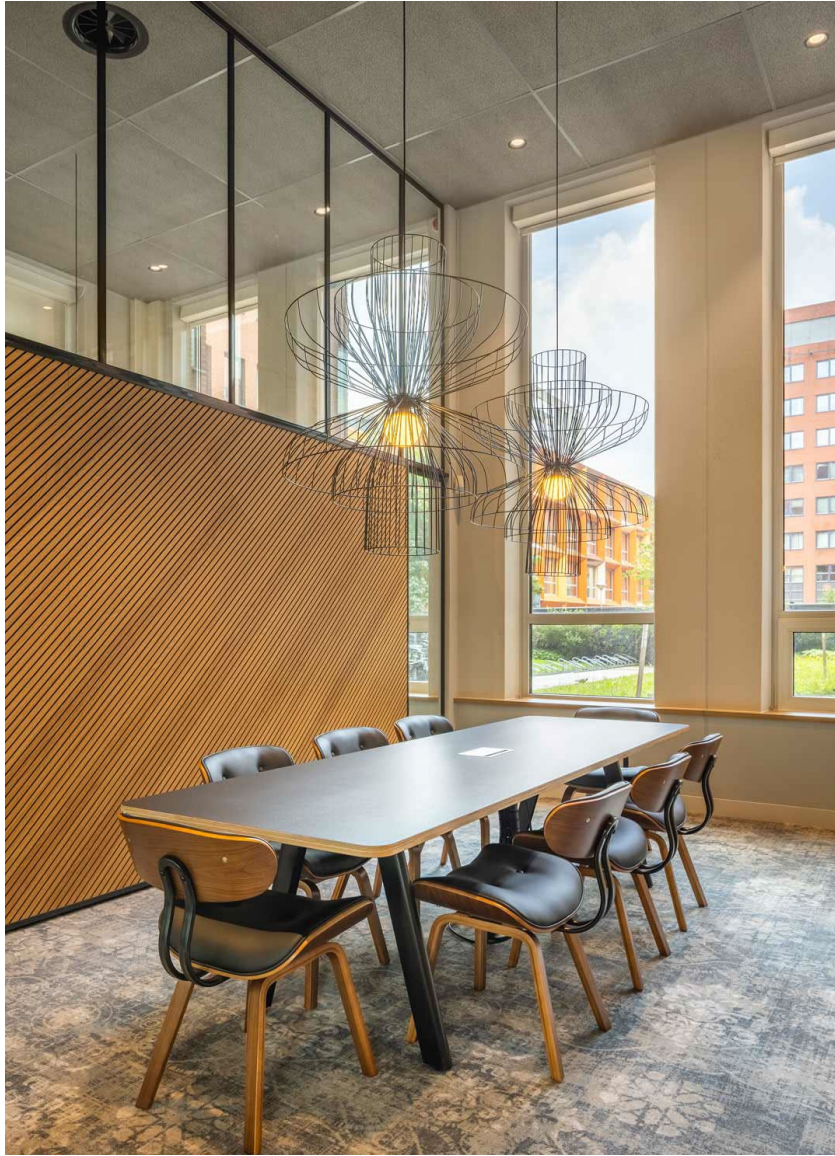
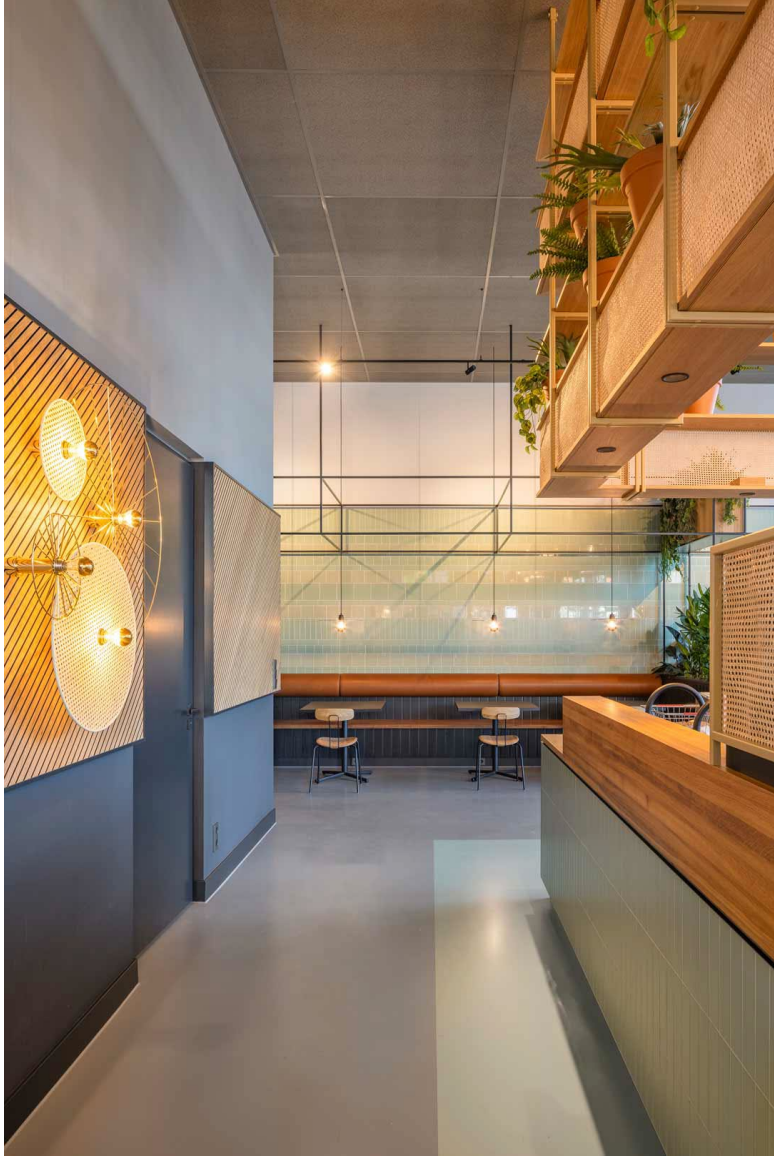




## OWAconsult collection

**Project:** Johanna Westerdijkplein, Den Haag  
**Product:** OWA RAW concrete  
**Country:** Netherlands  
**Segment:** Office







FOTOGRAFIE: SIMONE DE GEUS

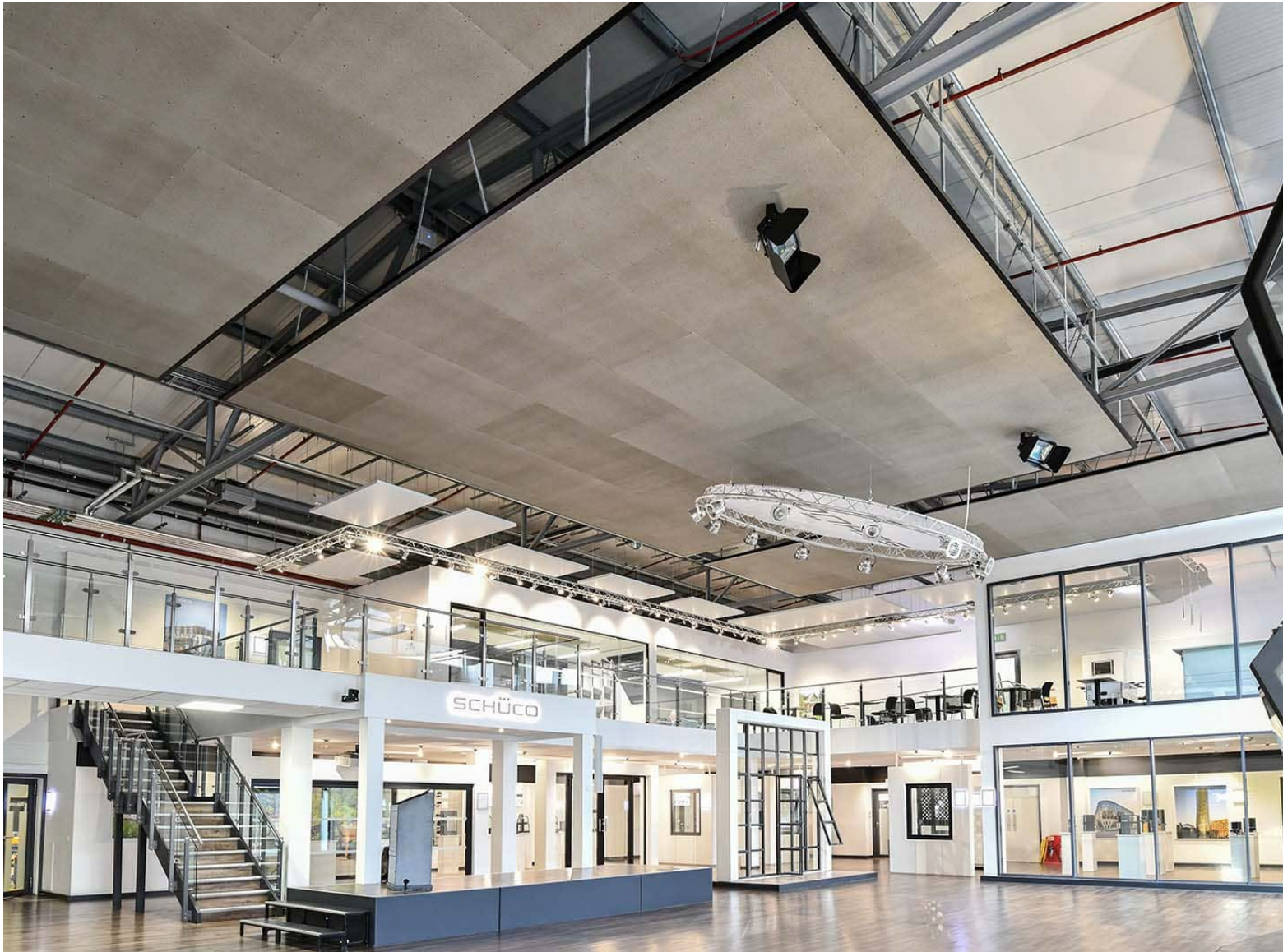
### OWAconsult collection

**Project:** Ronald McDonald Huis Emma,  
Amsterdam  
**Product:** OWA RAW concrete  
**Country:** Netherlands  
**Segment:** Hotel & Cuisine





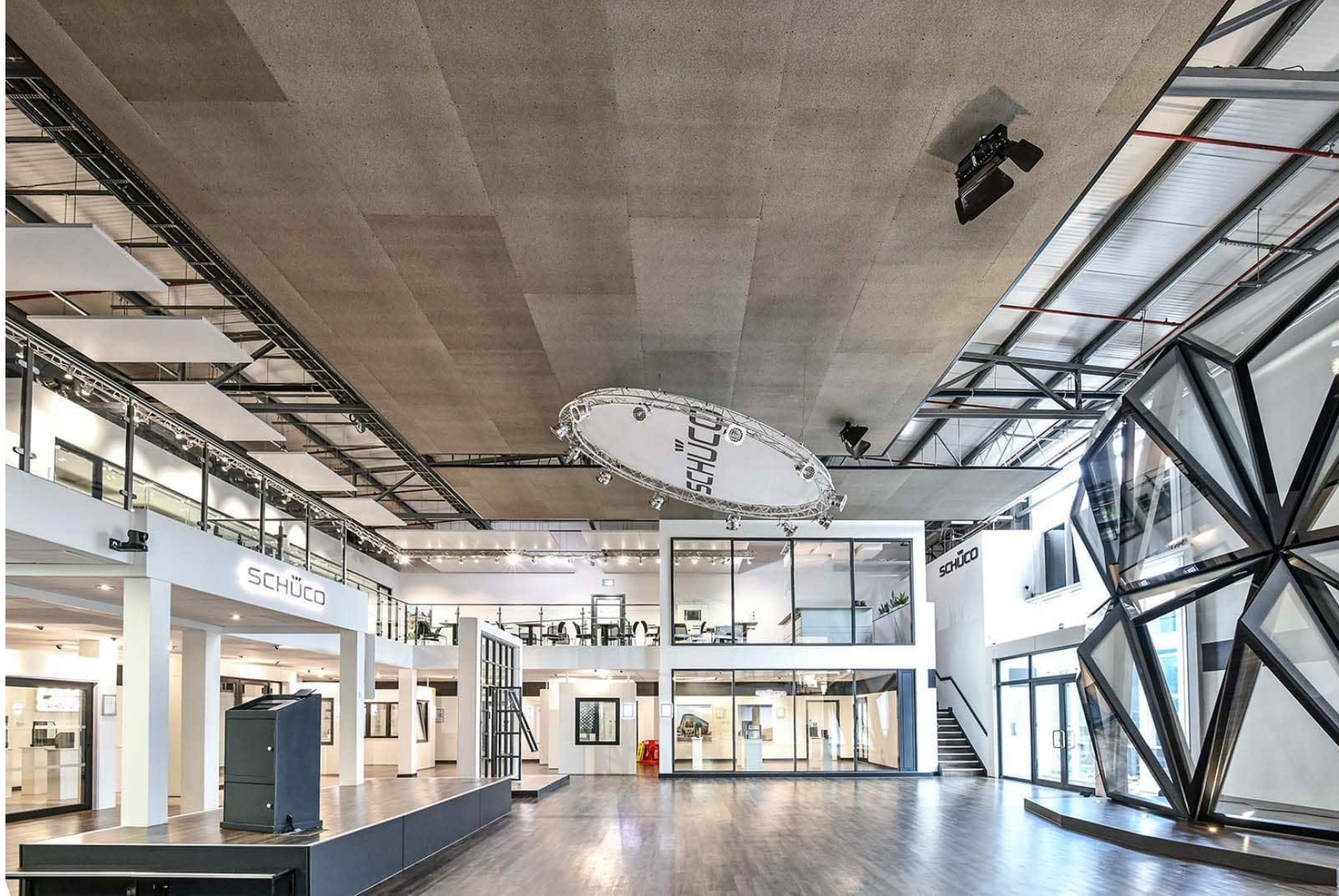




## OWAconsult collection

**Project:** Schüco Showroom, Milton Keynes  
**Product:** OWA RAW concrete  
**Country:** Great Britain  
**Segment:** Office









## OWAconsult collection

**Project:** Zuivelhoeve, Zwolle  
**Product:** OWA RAW concrete  
**Country:** Netherlands  
**Segment:** Retail

**[www.owa.de](http://www.owa.de)**

**Odenwald Faserplattenwerk GmbH**

Dr.-F.-A.-Freundt-Straße 3, 63916 Amorbach | Germany

Tel: + 49 93 73.2 01 - 0, Fax: + 49 93 73.2 01 - 81 91

E-Mail: [info@owa.de](mailto:info@owa.de)