

OWAcoustic®
premium

OWAconstruct®



EI 30 barriere
Self contained
fire protection EI 30
from above and below
– smoke impervious
EN 1364-2



Self contained fire protection EI 30
from above and below – smoke impervious

EI 30 barriere A

Element lengths up to 1500 mm

Technical Data

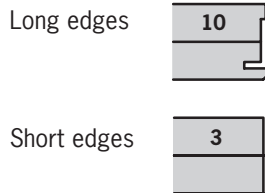
Product line:
OWAcoustic® premium

Dimensions:
Widths 300, 312.5, 400 mm
Lengths 1250, 1500 mm

Thickness:
approx. 40 mm

Building material class:
A2-s1,d0 to EN 13501-1

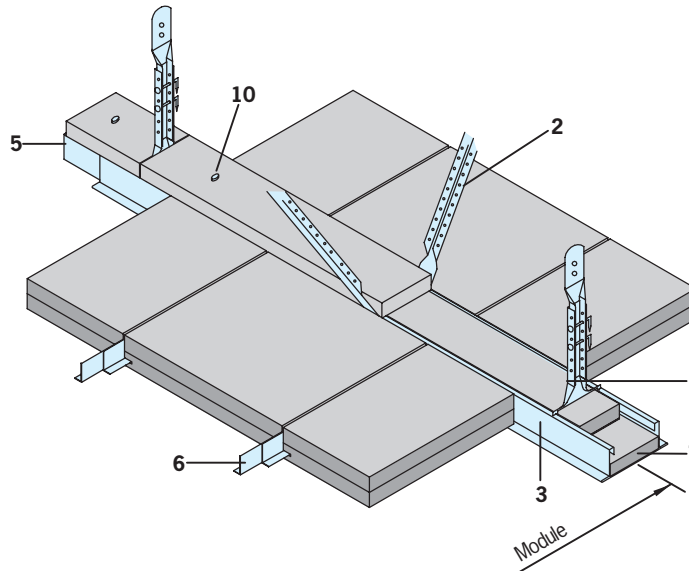
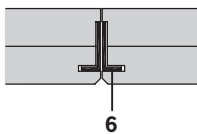
Edges:



Tile weight:
approx. 14 kg/m²

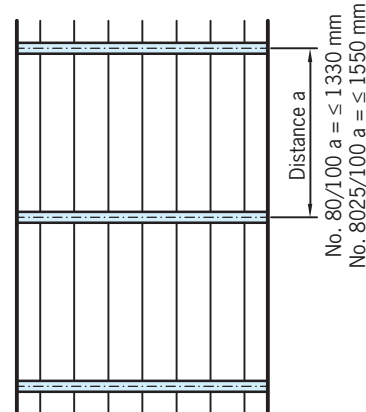
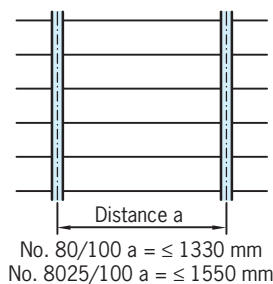
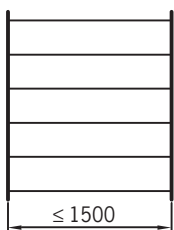
Metal system:
all metal sections are zinc
galvanized and white painted

Cross section:



- 1 Nonius-hanger No. 79/... , centres ≤ 750 mm or 1st hanger from the wall ≤ 300 mm
- 2 Nonius-Angle brace No. 17/80 (if required)
- 3 Bandraster section No. 80/... G
- 4 Bandraster section No. 8025/100
- 5 Connector No. 82/... for No. 80/... Connector No. 82/8025 for No. 8025/100
- 6 barriere-Section No. 37/15, thickness 1.5 mm
- 7 Minowa® panel strips for No. 80/100 G:
 - 7a approx. 16 mm thick, 76 mm wide, loose laid
 - 7b approx. 21 mm thick, 63 mm wide, glued together*
 - 7c approx. 16 mm thick, 74 mm wide, glued together*
- 8 Minowa® panel strips for No. 8025/100:
 - 8a approx. 16 mm thick, 50 mm wide, loose laid
 - 8b approx. 21 mm thick, 35 mm wide, glued together*
 - 8c approx. 16 mm thick, 45 mm wide, glued together*
- 9 Infill material (alt. to 7 and 8), height = ≥ 35 mm
- 10 Nail to prevent lateral movement
- 11 *with adhesive No. 99/24, on request 465 – 620 ml/m²

Installation examples:



Further details see page 7



**OWAcoustic®
premium**

OWAconstruct®

Self contained fire protection EI 30
from above and below – smoke impervious

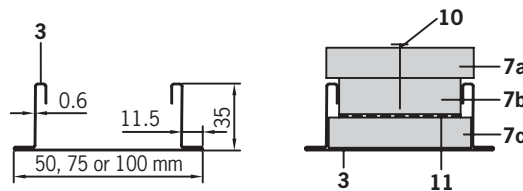
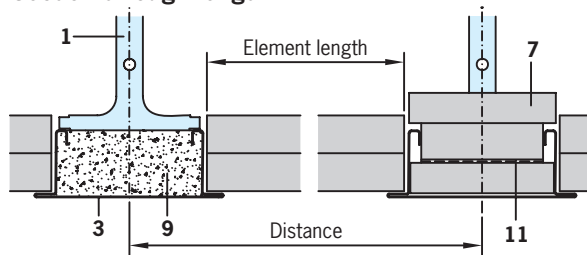
EI 30 barriere A

Element lengths up to 1500 mm



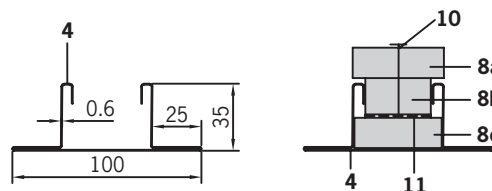
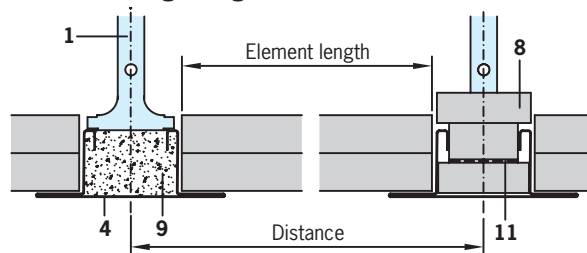
With element lengths \leq 1250 mm with Bandraster Section No. 80/50 G, 80/75 G and 80/100 G

Section through length:



With element lengths $>$ 1250 mm with Bandraster section No. 8025/100

Section through length:



With element lengths $>$ 1250 mm use Bandraster section No. 8025/100. Both flanges of the section: 25 mm. The spacings of the Nonius hangers are at: \leq 625 mm.

Bandraster section with Minowa® board strips laid in.
Alternative:
Bandraster section completely filled with binder material.

Wall junctions see page 6



Self contained fire protection EI 30
from above and below – smoke impervious

EI 30 barriere B

Element lengths up to 2250 mm

Technical Data

Product line:
OWAcoustic® premium

Dimensions:
Widths 300, 312.5 mm
Lengths 1800, 2000, 2250 mm

Thickness:
approx. 44 mm

Building material class:
A2-s1,d0 to EN 13501-1

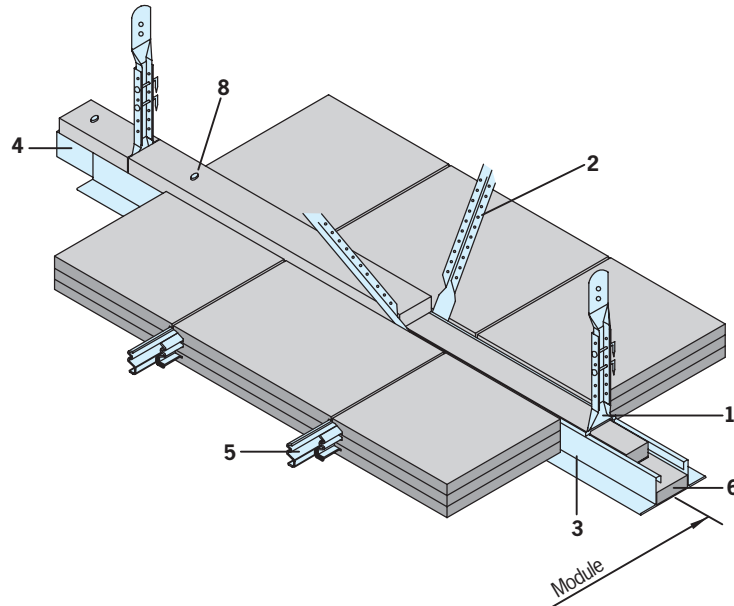
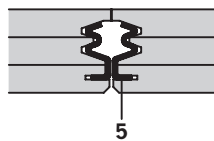
Edges:



Tile weight:
approx. 17 kg/m²

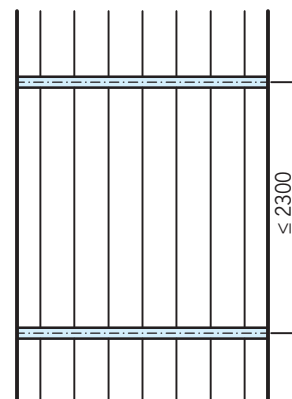
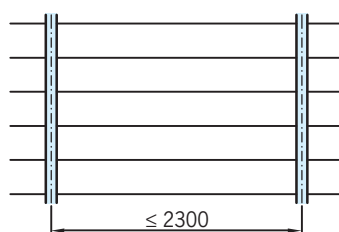
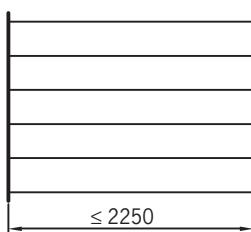
Metal system:
All metal sections are zinc
galvanized and white painted.

Cross section:



- 1 Nonius-hanger No. 79/75 , centres ≤ 625 mm or 1st hanger from the wall ≤ 300 mm
- 2 Nonius-Angle brace No. 17/80 (if required)
- 3 Bandraster section No. 8025/100
- 4 Connector No. 82/8025
- 5 barriere-section No. 37/25, thickness 2.0 mm
- 6 Minowa® panel strips No. 8025/100:
- 6a approx. 16 mm thick, 50 mm wide, loose laid
- 6b approx. 21 mm thick, 35 mm wide, glued together*
- 6c approx. 16 mm thick, 45 mm wide, glued together*
- 7 Infill material (alt. to 6), height = ≥ 35 mm
- 8 Nail to prevent lateral movement
- 9 *with adhesive No. 99/24, on request 465 – 620 ml/m²

Installation examples:



Further installation examples see page 7



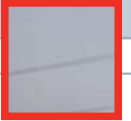
**OWAcoustic®
premium**

OWAconstruct®

Self contained fire protection EI 30
from above and below – smoke impervious

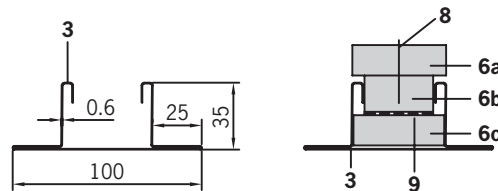
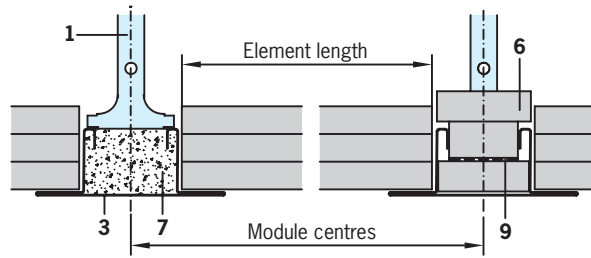
EI 30 barriere B

Element lengths up to 2250 mm



With element lengths up to 2250 mm with Bandraster section
No. 8025/100

Section through length:



With element lengths up to 2250 mm
use Bandraster section No. 8025/100.
Both flanges of the section: 25 mm.
The spacings of the Nonius hangers
are at: ≤ 625 mm.

Bandraster section with Minowa®
board strips laid in.
Alternative:
Bandraster section completely filled
with binder material.

Wall junctions see page 6



Self contained fire protection EI 30
from above and below – smoke impervious

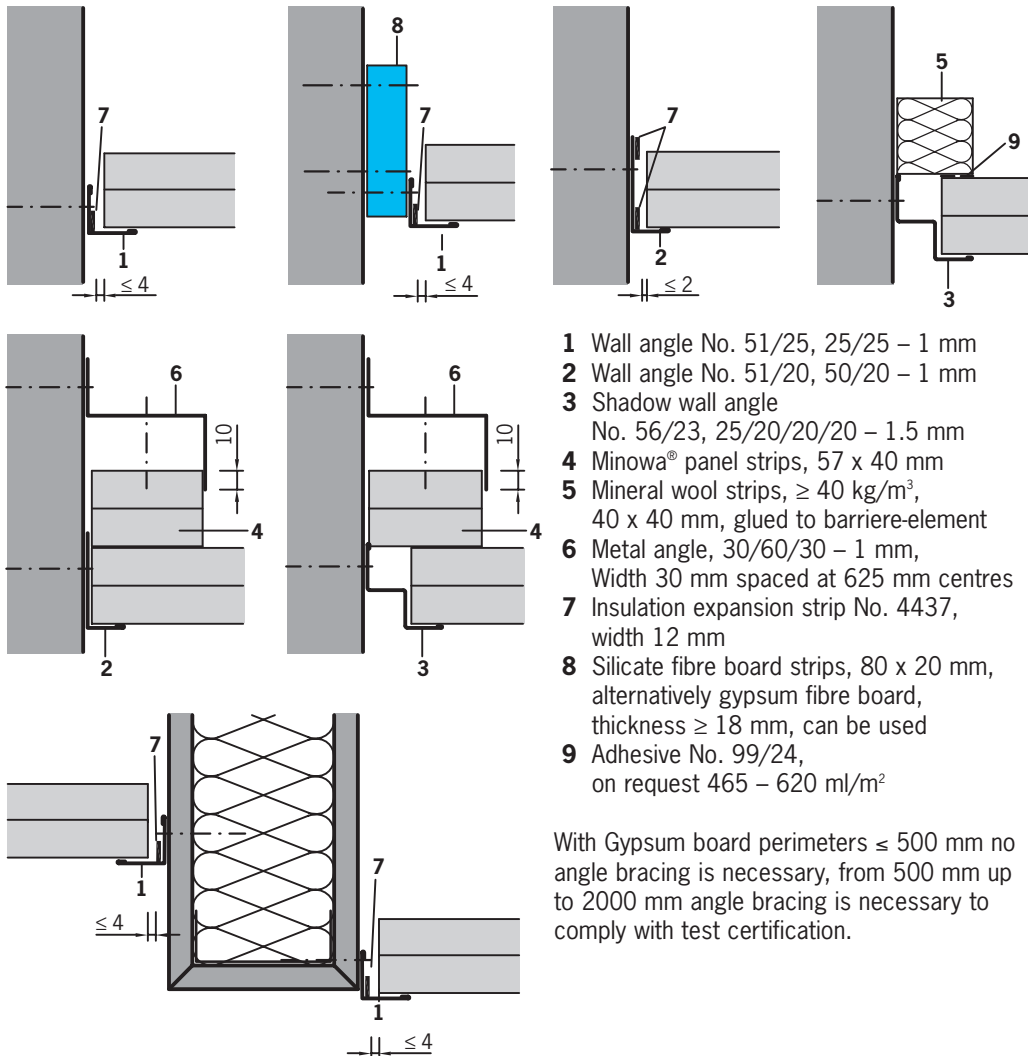
EI 30 barriere A and B

Wall junctions

barriere EI 30-junctions:

- at solid walls
- at lightweight EI 30-Gypsum board walls
- at EI 30-Gypsum board perimeters
- at EI 30-Ceiling level changes

The illustrated wall junctions can alternatively be used in the above listed construction situations.



- 1 Wall angle No. 51/25, 25/25 – 1 mm
- 2 Wall angle No. 51/20, 50/20 – 1 mm
- 3 Shadow wall angle No. 56/23, 25/20/20/20 – 1.5 mm
- 4 Minowa® panel strips, 57 x 40 mm
- 5 Mineral wool strips, $\geq 40 \text{ kg/m}^3$, 40 x 40 mm, glued to barriere-element
- 6 Metal angle, 30/60/30 – 1 mm, Width 30 mm spaced at 625 mm centres
- 7 Insulation expansion strip No. 4437, width 12 mm
- 8 Silicate fibre board strips, 80 x 20 mm, alternatively gypsum fibre board, thickness $\geq 18 \text{ mm}$, can be used
- 9 Adhesive No. 99/24, on request 465 – 620 ml/m²

With Gypsum board perimeters $\leq 500 \text{ mm}$ no angle bracing is necessary, from 500 mm up to 2000 mm angle bracing is necessary to comply with test certification.

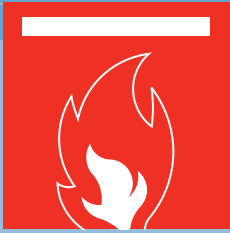
Fixing materials for perimeter wall sections at solid walls:

Metal drive dowels, metal anchors or screws; according to existing background.
Fixings distance $\leq 200 \text{ mm}$.

Fixing wall sections to gypsum board walls and borders as well as ceiling level changes:

Application with fast screws 3.5 x 35 mm, fixing distance: $\leq 210 \text{ mm}$.
Every third screw should be located into the vertical studs in the gypsum board walls and also in the relevant sections at gypsum board perimeters.
The elements must rest on at least 4/5ths of wall section flange.

During installation care must be taken that the elements are fixed in the direction of the arrows (on rear of panel) and are only pushed lightly together. The demountability of the elements should be checked during the installation.



**OWAcoustic®
premium**

OWAconstruct®

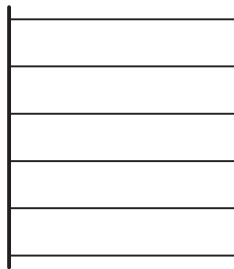
Self contained fire protection EI 30
from above and below – smoke impervious

EI 30 barriere A and B

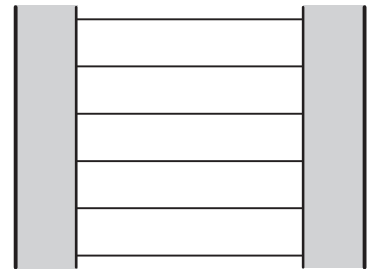
Further installation examples



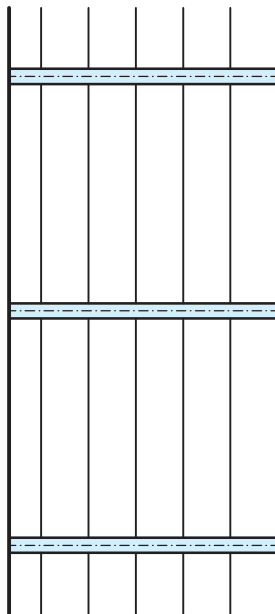
In Corridors:



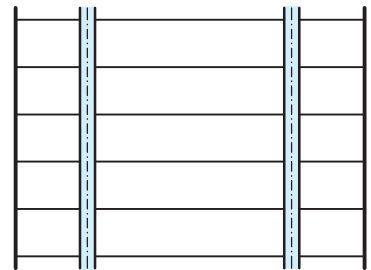
Clear spanning wall to wall



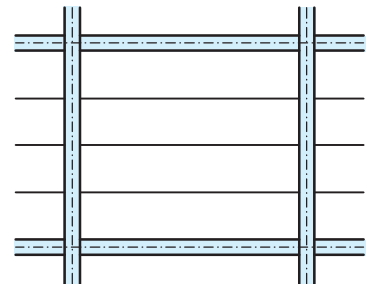
Clear spanning with gypsum board
frieze on two sides



Bandraster in cross direction

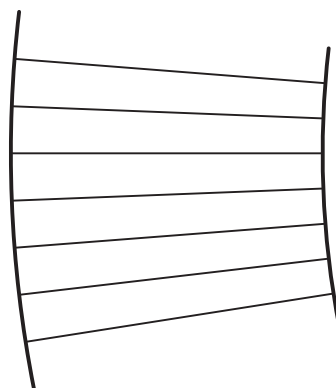


Bandraster in long direction

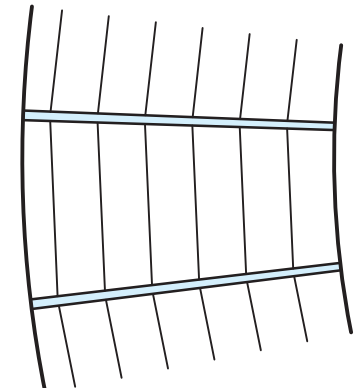


Bandraster in both direction

In circular corridors:



Clear spanning wall to wall



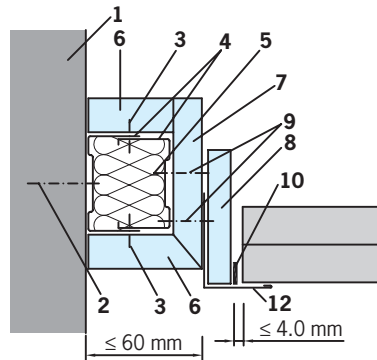
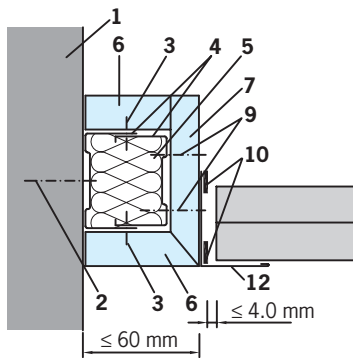
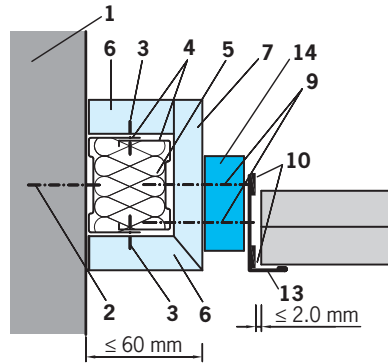
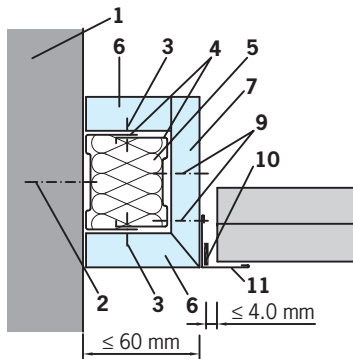
Bandraster in cross direction



Self contained fire protection EI 30
from above and below – smoke impervious

EI 30 barriere A and B

with EI 30-Gypsum board-frieze (without hangers)



- 1 Block work
- 2 Metal anchor, \varnothing 6 mm and screw, centres \leq 400 mm
- 3 Steel rivets, \varnothing 3.2 mm, centres \leq 400 mm
- 4 U-Profile, 50 mm, thickness 1 mm und C-Profile, 50 mm, thickness 1 mm
- 5 Mineral wool, \geq 40 kg/m³, 50 x 45 mm
- 6 Gypsum fire board, thickness 18 mm
- 7 Gypsum fire board, thickness 18 mm, height 86 mm
- 8 Gypsum fire board, thickness 12.5 mm, height 75 mm
- 9 Fast screws 3.5 x 35 mm or 3.5 x 55 mm with 14, centres at \leq 200 mm
- 10 Insulation expansion strips No. 4437, width 12 mm
- 11 Wall angle No. 51/25, 25/25 – 1 mm
- 12 Wall angle No. 51/1, 50/35 – 1 mm
- 13 Wall angle No. 51/20, 50/20 – 1 mm
- 14 Silicate fibre board strips, 50 x 20 mm, Alternatively gypsum fibre board, thickness \geq 18 mm or gypsum fibre boards, thickness \geq 18 mm, can be used

To 1 and 2:

It is recommended that with light weight EI 30-Gypsum dry walls and perimeter frieze constructions, that 3.5 x 35 mm self drive fast screws are used Fixings centres \leq 210 mm.

Every third screw should be located into the vertical studs in the gypsum board dry walls.





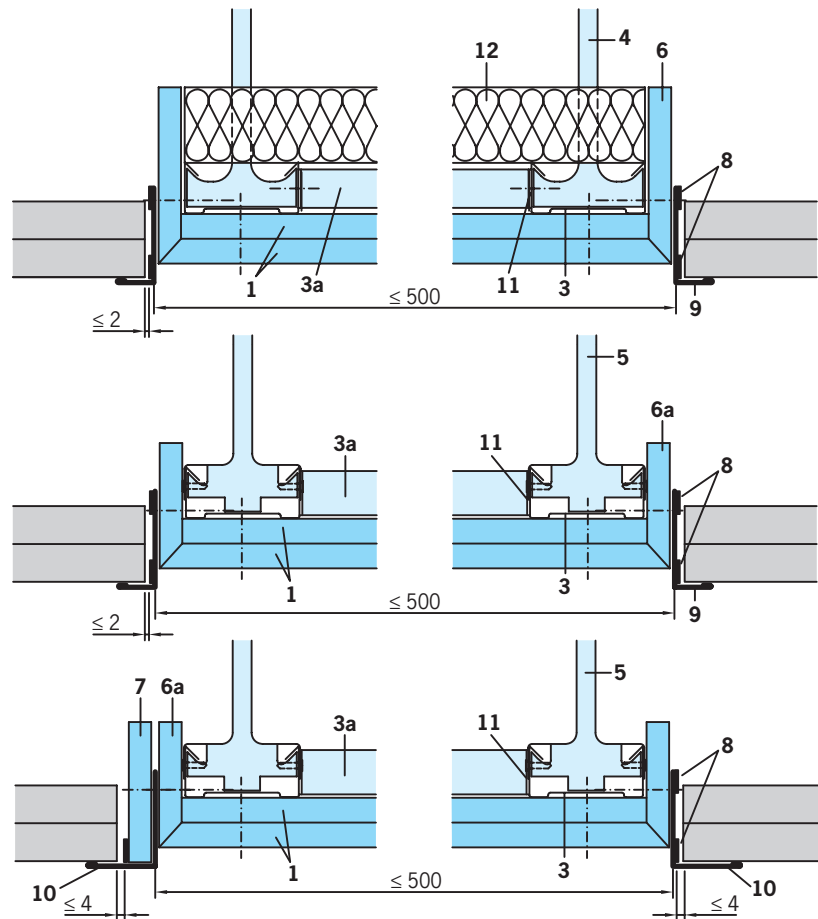
OWAcoustic®
premium

OWAconstruct®

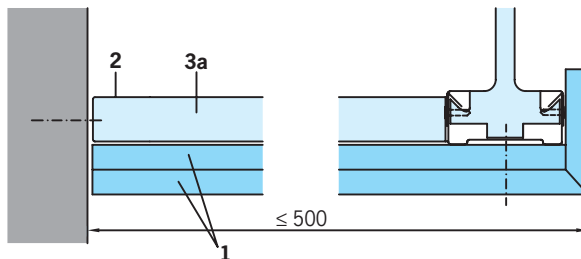
Self contained fire protection EI 30
from above and below – smoke impervious

EI 30 barriere A and B

with EI 30-Gypsum board central or border frieze



Wall junction perimeter frieze:



- 1 Gypsum fire board, thickness 2 x 12.5 mm
- 2 U-Profile 27/28/27
- 3 Basic section CD 60/27 – 0.6 mm
- 3a Cross section CD 60/27 – 0.6 mm, centres 500 mm
- 4 Nonius-hanger, centres ≤ 500 mm
- 5 Nonius-hanger (0.4 kN) with CD-section screwed together ≤ 500 mm
- 6 Gypsum fire board, thickness 12.5 mm, height 70 mm
- 6a Gypsum fire board, thickness 12.5 mm, height 60 mm
- 7 Gypsum fire board, thickness 12.5 mm, height 75 mm
- 8 Insulation layer holders No. 4437, width 12 mm
- 9 Wall angle No. 51/20, 50/20 – 1 mm
- 10 Wall angle No. 51/1, 50/35 – 1 mm
- 11 Cross connector
- 12 Mineral wool ≥ 40 kg/m³, A1, thickness 40 mm

Attention:
The wall trims can be installed in the same height as the plaster boards to have an even surface.

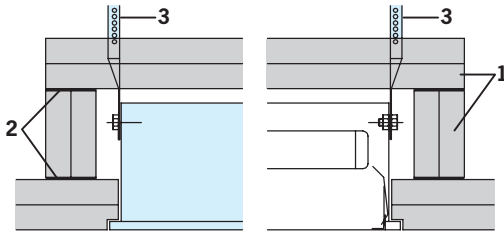


Self contained fire protection EI 30
from above and below – smoke impervious

EI 30 barriere A and B

Light fittings 2 x 36 Watt

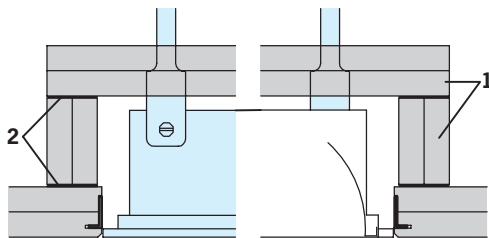
Section through – Variation A und B:



OWA Light fittings:

OWA can supply suitable standard mounting light fittings for this system. See OWA Brochure No. 630.

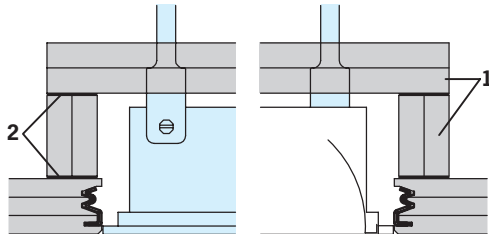
Cross section – Variation A:



Air outlets:

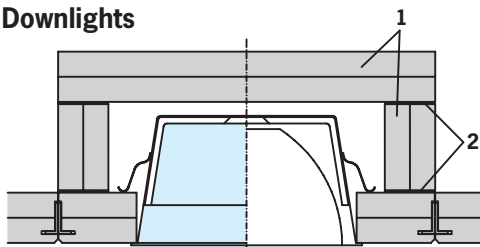
If you want to install air outlets please contact our technical information service.

Cross section – Variation B:



- 1 Minowa® board, thickness 40 mm
- 2 Panels glued together with adhesive No. 99/24
- 3 Nonius hanger
- 4 CD-Profile 60/27 – 0.6 mm
- 5 Fast screws 3.5 x 55 mm (3 Screws per light fitting)

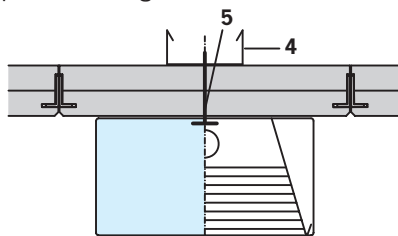
Downlights



When using hangers to install downlights the technical information service dept. should be consulted.

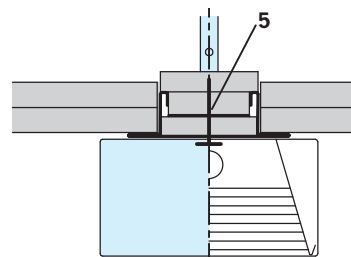
Downlights can be installed within a ceiling cut out of $\varnothing \leq 215$ mm.

Surface mounted 1 x 58 Watt (up to max. 6 kg)



Fixing the light fitting to the Bandrastrer section:

In the area of the fixing point a U-section or connector No. 82/75 should be inserted into the Bandrastrer section.





**OWAcoustic®
premium**

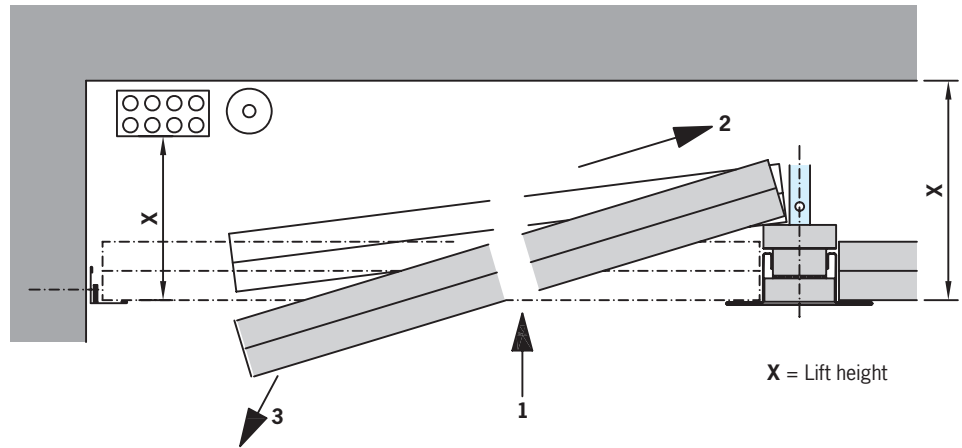
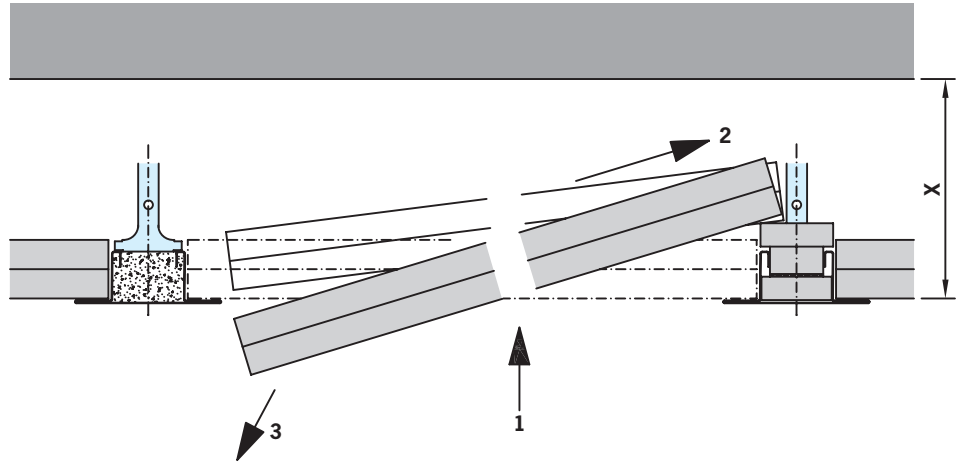
OWAconstruct®

Self contained fire protection EI 30
from above and below – smoke impervious

EI 30 barriere A and B



Demounting the Element



- 1 Movement of the panel element in arrow direction (lift height according to installation)
- 2 Element moved up and sideways (until removal is possible)
- 3 Element removed in arrow direction

Necessary lift height **X** for removal:

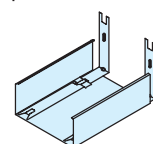
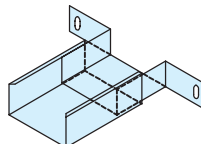
- with Bandraester section (filled with binder): ≥ 110 mm
- with Bandraester section (Minowa® board strip inserts): ≥ 130 mm
- from wall to wall, with shadow joint: ≥ 140 mm
- from wall to wall, without shadow joint: ≥ 280 mm
- with suspended EI 30-Gypsum board frieze: ≥ 140 mm

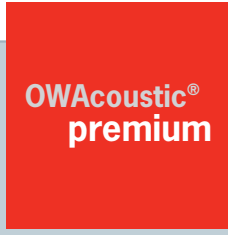
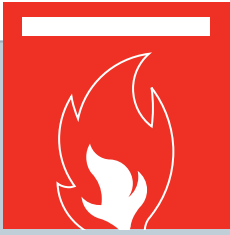
Note: When installing in the ceiling cavity, the lift height X must be calculated from the lower edge of the installation.

Accessoires:

Wall anchor No. 75/... for binder infill or securing cross bandraester

Wall anchor No. 75/... for Minowa® board strips





Material quantities per m²:

Example for calculating standard dimensions

		EI 30 barriere A		EI 30 barriere B
Module size of Bandraster section		1330 x 312.5 mm	1580 x 312.5 mm	2300 x 312.5 mm
Exact size		1250 x 312.5 mm	1500 x 312.5 mm	2250 x 312.5 mm
No.	Component			
79/100	Nonius-hanger	1.01 pcs	—	—
79/75	Nonius-hanger	—	0.86 pce	0.70 pce
80/100 G	Bandraster section	0.76 m	—	—
8025/100	Bandraster section	—	0.65 m	0.44 m
82/100	Connector	0.21 pce	—	—
82/8025 G	Connector	—	0.17 pce	0.12 pce
75/...	Wall anchor	dependent on room size and shape		
51/25	Wall section	dependent on room size and shape		
37/15	L-Profile	4.82 pcs	4.13 pcs	—
37/25	Barriere-Profile	—	—	2.78 pcs

The material quantities are for individual components required per m² of the planned ceiling.

Weight per m²:

Construction approx.	3.10 kg/m ²	2.99 kg/m ²	5.58 kg/m ²
Panel 40 mm, A2-s1,d0	14.0 kg/m ²	14.0 kg/m ²	—
Panel 44 mm, A2-s1,d0	—	—	17.0 kg/m ²

Guarantee and liability

All system relevant data and statements correspond to the current technology. They assume the exclusive application of OWA products and system components, the interdependent behaviour of which is confirmed by internal and external testing. When they are used in combination with non OWA products and system components any warranties or guarantees are invalidated and liability will not be accepted. OWA reserves the right to make any technical alterations to improve either product or system development. All goods are supplied in accordance with our general sale and delivery terms.



Odenwald Faserplattenwerk GmbH

Dr.-F.-A.-Freundt-Straße 3
 63916 Amorbach · Germany
 Telefon +49 9373 2 01-0
 Telefax +49 9373 2 01-1 30
 www.owa.de · E-Mail: info@owa.de